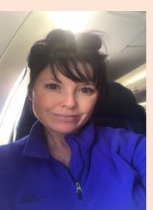




**BE SURE TO CONTACT  
YOUR MDA REGIONAL  
FIREFIGHTER  
MANAGER FOR ANY  
QUESTIONS!**



**SABRINA ALLEN**  
[sallen@mdausa.org](mailto:sallen@mdausa.org)  
720.341.1828



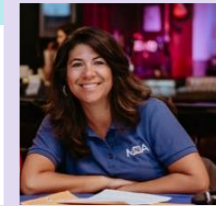
**JENNY MCGAHAN**  
[jmcgahan@mdausa.org](mailto:jmcgahan@mdausa.org)  
406.698.9023



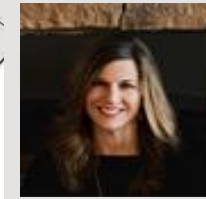
**ELIZABETH NELSON**  
[enelson@mdausa.org](mailto:enelson@mdausa.org)  
414.403.2047



**JENNIE KING**  
[jkking@mdausa.org](mailto:jkking@mdausa.org)  
859.445.2445



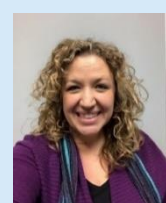
**JANE TESTA**  
[jtesta@mdausa.org](mailto:jtesta@mdausa.org)  
401.225.6736



**HOLLY CARROLL**  
[hcarroll@mdausa.org](mailto:hcarroll@mdausa.org)  
423.503.4829



**ERIN RANDALL**  
[erandall@mdausa.org](mailto:erandall@mdausa.org)  
239.222.3502



**BECKY PRINE**  
[bprine@mdausa.org](mailto:bprine@mdausa.org)  
918.855.3993



tables 2012. All right